

California



PIONEERING TECHNOLOGY

Optos introduces its latest ultra-widefield (UWF[™]) imaging device, **California**, designed to be customizable for use in multiple eyecare settings. With this new device, Optos now offers ultra-widefield indocyanine green angiography (*icg*) in combination with:

- Composite color
- Red-free
- Autofluorescence (*af*)
- Fluorescein angiography (*fa*)

Images are now presented in ProView[™] which displays **optomap** in a consistent geometry that accurately represents anatomical features in the retina. Further, ProView enables automatic image registration for tracking over time and inter-modality image comparison.

The new optical design optimizes and maintains resolution of the **optomap** images throughout the scan of the retina resulting in more clarity in the far periphery.

Image overlay enables comparison between composite color images and red-free, *af*, *fa*, or *icg* images. Additionally, comparisons can be made between different images or different dates by scrolling through all stored images from the current or prior visit.

California



BENEFITS

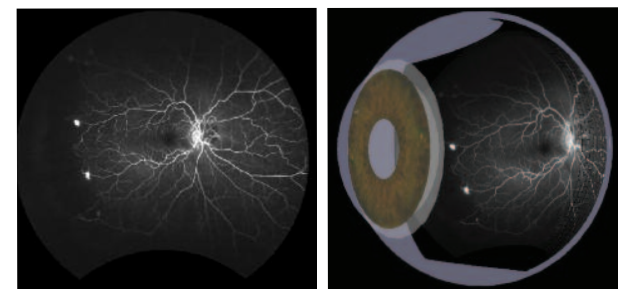
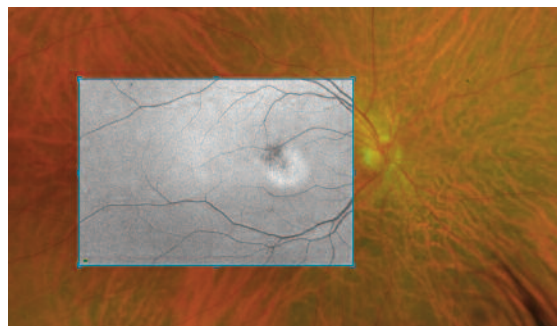
- California is designed as a compact, table-top model to reduce space requirements. Further, the new design leads to ease of use and faster image capture.
- Non-mydratric, high resolution imaging through many cataracts and/or 2mm pupils saves time in busy practices.
- Comprehensive retinal analysis through multiple wavelengths and image modalities, all in UWF.
- Composite color images can be viewed in their separate laser channels to show specific depths of the retina:
 - Green (532 nm) “red-free” visualizes the sensory retina to the RPE
 - Red (635 nm) shows deeper structures of the retina (RPE to choroid)
 - Infrared (802 nm) provides images at the choroid level
 - Blue (488 nm) is used during *fa* procedures

Innovative OptosAdvance review platform that simplifies workflow while enabling comparison overlay between image modalities and different dates, over time.

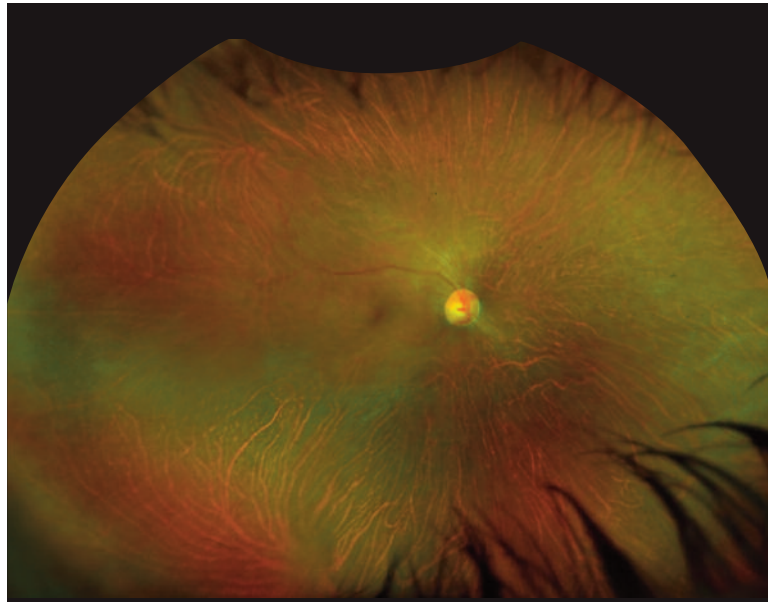
Browser-based image review enables simple integration and easy access to your data from any connected PC or tablet in a HIPPA compliant environment.

Interweaved Angiography enables capture of *fa* and *icg* images without manually switching between imaging modalities.

With UWF views of 200 degrees or up to 82% of the retina, eyecare professionals can see 50% more of the retina when compared to other conventional imaging devices¹.

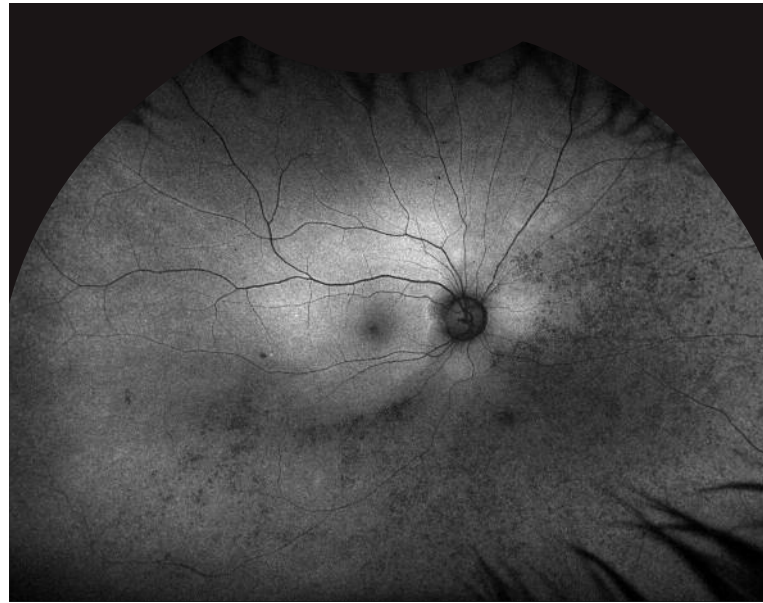


¹ Kiss et al. Comparison of ultra-widefield fluorescein angiography with the Heidelberg Spectralis[®] noncontact ultra-widefield module versus the Optos optomap. Clin. Ophthalmol. 2013, 389-94.



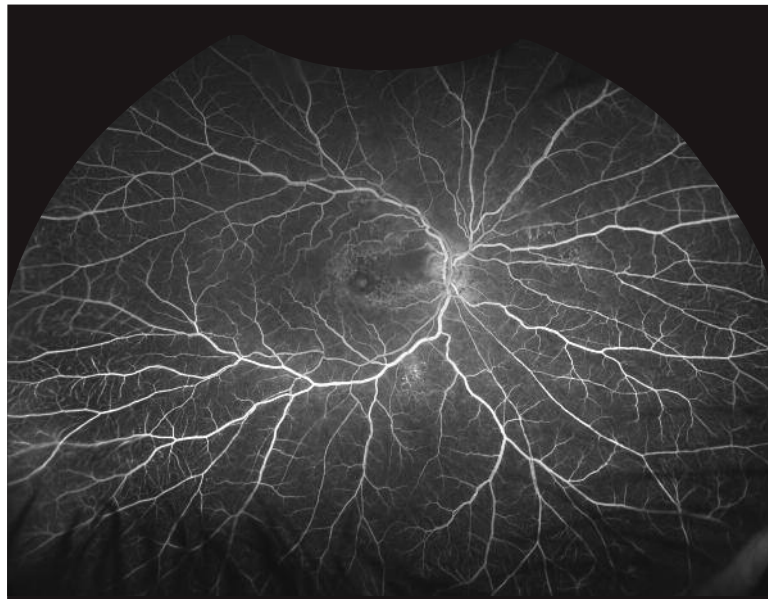
optomap **plus**

Courtesy of Srinivas Sadda, MD



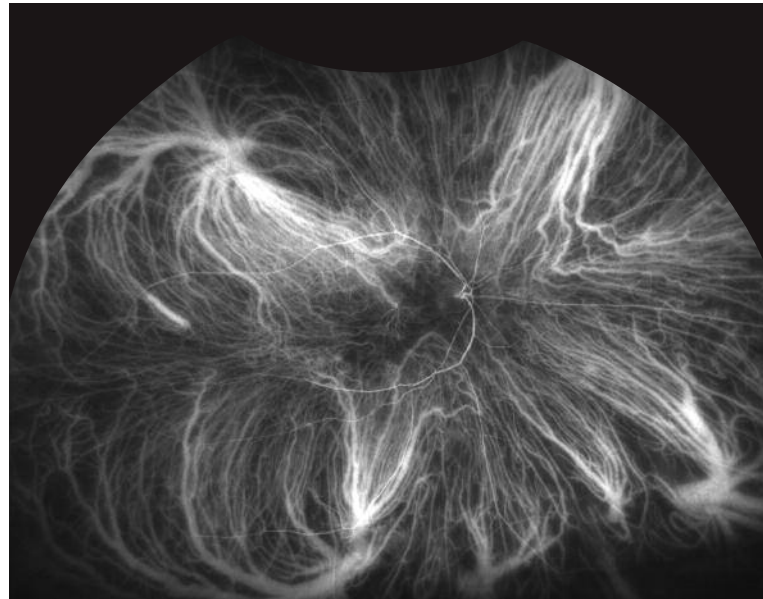
optomap **af**

Courtesy of Srinivas Sadda, MD



optomap **fa**

Courtesy Paulo Stanga, MD



optomap **icg**

Courtesy of Srinivas Sadda, MD

*“One of the great advantages of the Optos system has been the ability to capture the largest field of view in one image. The reality is that we didn’t know until we had ultra-widefield just how much disease was out in the far periphery. With the introduction of **California**, we have all of the current image modalities with the added benefit of ICG angiography imaging. ICG is going to be huge because it is an important component in treating difficult disease such as uveitis. I’m particularly excited about the new improvements to the optical system that further enhance visualisation of the inferior and superior periphery.”*

Srinivas R. Sadda, MD
Doheny Eye Institute

TECHNICAL SPECIFICATIONS



MODEL NUMBER	P200DTx
TRADE NAME	California
IMAGE TYPES	optomap and optomap plus (red and green laser): Color composite Green Laser View Red Laser View optomap af (green laser): autofluorescence
RESOLUTION	optomap: 20 µm optomap plus, af : 14 µm
WAVELENGTHS	Red laser: 635 nm Green laser: 532 nm
EXPOSURE TIME	Less than 0.4 seconds
FOOT PRINT	Width: 550 mm / 22 inches Depth: 550 mm / 22 inches including chinrest Height: 608-632 mm / 24-25 inches
WEIGHT	34 kg/ 75 lbs
LASER CLASS	Laser safety Class-1 following IEC/EN60825-1:2007 and 21 CFR1040.10 and 1040.11
SYSTEM VOLTAGE	US: 100-120V at 50/60Hz EU/AU: 200-240V at 50-60Hz
POWER CONSUMPTION	Max. 300 VA
COMMUNICATION PROTOCOL	DICOM Compatible

MODEL NUMBER	P200DTx
TRADE NAME	California
IMAGE TYPES	optomap and optomap plus (red and green laser): Color composite Green Laser View Red Laser View optomap af (green laser): autofluorescence optomap fa (blue laser): fluorescein angiography
RESOLUTION	optomap: 20 µm optomap plus, af, fa : 14 µm
WAVELENGTHS	Red laser: 635 nm Green laser: 532 nm Blue laser: 488 nm
EXPOSURE TIME	Less than 0.4 seconds
FOOT PRINT	Width: 550 mm / 22 inches Depth: 550 mm / 22 inches including chinrest Height: 608-632 mm / 24-25 inches
WEIGHT	34 kg/ 75 lbs
LASER CLASS	Laser safety Class-1 following IEC/EN60825-1:2007 and 21 CFR1040.10 and 1040.11
SYSTEM VOLTAGE	US: 100-120V at 50/60Hz EU/AU: 200-240V at 50-60Hz
POWER CONSUMPTION	Max. 300 VA
COMMUNICATION PROTOCOL	DICOM Compatible

MODEL NUMBER	P200DTx
TRADE NAME	California
IMAGE TYPES	optomap and optomap plus (red and green laser): Color composite Green Laser View Red Laser View optomap af (green laser): autofluorescence optomap fa (blue laser): fluorescein angiography optomap icg (infra-red): indocyanine green angiography
RESOLUTION	optomap: 20 µm optomap plus, af, fa, icg : 14 µm
WAVELENGTHS	Red laser: 635 nm Green laser: 532 nm Blue laser: 488 nm Infrared laser: 802 nm
EXPOSURE TIME	Less than 0.4 seconds
FOOT PRINT	Width: 550 mm / 22 inches Depth: 550 mm / 22 inches including chinrest Height: 608-632 mm / 24-25 inches
WEIGHT	34 kg/ 75 lbs
LASER CLASS	Laser safety Class-1 following IEC/EN60825-1:2007 and 21 CFR1040.10 and 1040.11
SYSTEM VOLTAGE	US: 100-120V at 50/60Hz EU/AU: 200-240V at 50-60Hz
POWER CONSUMPTION	Max. 300 VA
COMMUNICATION PROTOCOL	DICOM Compatible

NOTE: Specifications are subject to change without notice.



Optos plc
Queensferry House
Carnegie Campus
Enterprise Way
Dunfermline, Fife
Scotland KY11 8GR
Tel: +44 (0)1383 843300
info@optos.com

Optos, Inc.
67 Forest Street
Marlborough, MA 01752
USA
Call Toll-free (US & Canada):
1-800-854-3039
Outside of the US: +1 508 787 1400
usinfo@optos.com

Optos Australia
10 Myer Court
Beverley
South Australia 5009
Tel: +61 8 8443 4533
auinfo@optos.com

