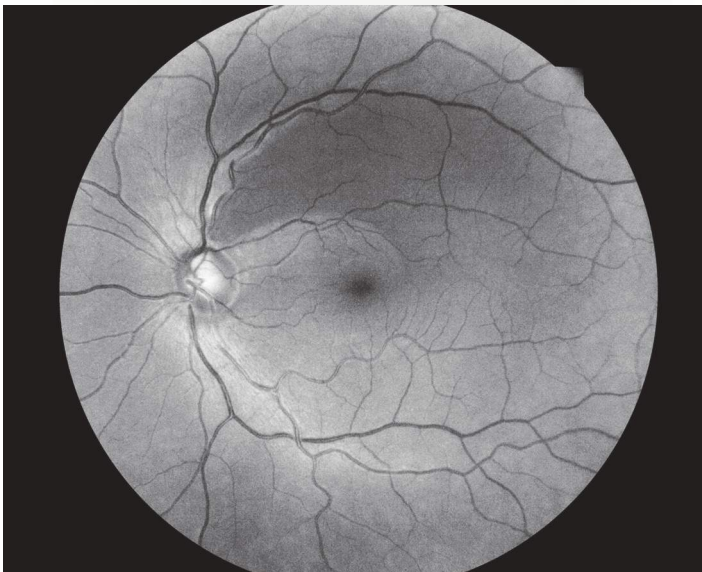
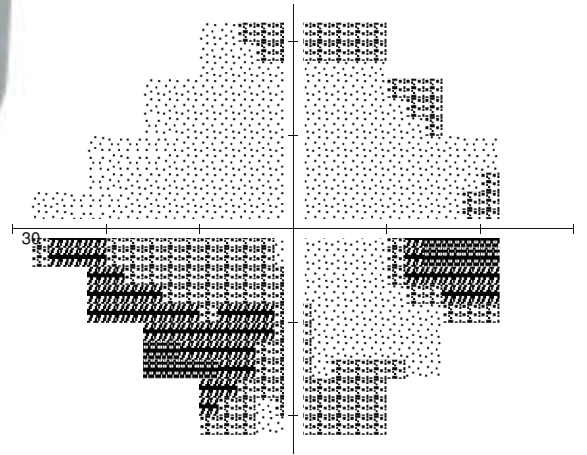


compass

Fundus Automated Perimetry (FAP)

Combining Standard 24-2 Visual Field and True-Color Confocal Imaging



RNFL Detail



ONH Detail



COMPASS Printout

The comprehensive printout features traditional visual field maps combined with unique FAP structure & function analysis and real time retinal tracking performance.

- 1 Patient info
- 2 Exam info
- 3 Examined eye
- 4 Threshold values over red-free retinal image
- 5 Color image of ONH
- 6 Mean Deviation and Pattern Standard Deviation
- 7 Mean Deviation separately for 6 clusters
- 8 Standard VF map
- 9 Deviation maps
- 10 Retinal Tracking Performance results
- 11 Fixation area and graph describing amplitude of eye movement vs. time
- 12 True-color 60° confocal fundus image

